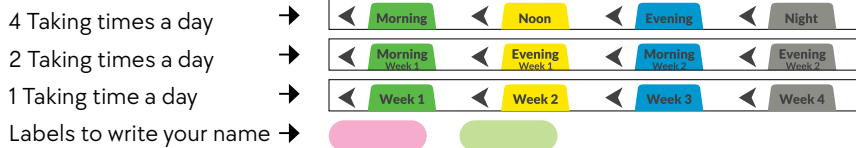


Safety Instructions

- Keep in a shady and cool place.
 - Clean with damp cloth, without alcohol!
 - For use from the age of 16 and above
 - When using the Dispenser the choosing square has to point toward the user
 - Only the cartridges can be washed with water \ dishwasher and to be well dried.
 - In case the pills are not allowed to be extracted from their original package, you can cut around the pill and place it inside its designated cell in its original package.
 - In any chance when you open the Dispenser to check on the pills, you have to turn the bottom time of taking ring to be set to 'Close' to prevent from pills falling.
 - Don't play \ bend the latch of the cartridges and the closing latches of the Box with extra Cartridges if you don't need to.
 - **The user is responsible for the order of the pills and the right use of the Dispenser - extracting and inserting or the use of the right pills at the right time.**
 - 12 months guarantee starting from the date of purchase, any breakage or invalid use of the product that is not by the instructions is not included in the guarantee.
- The instructions are written in male voice but they address men and women as one.

Labels for the time of taking and names list

For your convenience, we added customizable labels for the time of taking and those you can paste and change in the table above, based on your taking time. In addition to that, we have added username labels for identification purposes in case there is more than one user .in the family. Just write the name and paste it in the designated place on the Dispenser.



Additional Accessories



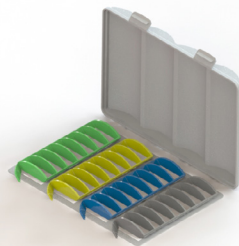
Clock Reminder

So you won't forget any pill! Smartwatch that will remind you to take your vitamins \ pills in accordance to the time you set it. Including 6 notifications, beeping, and flickering. Attaches to the top part of the Dispenser.



Small Box To Go

Your pills are always with you! A small pillbox is separated into four cells + pill cutter. Attaches to the bottom part of the Dispenser.



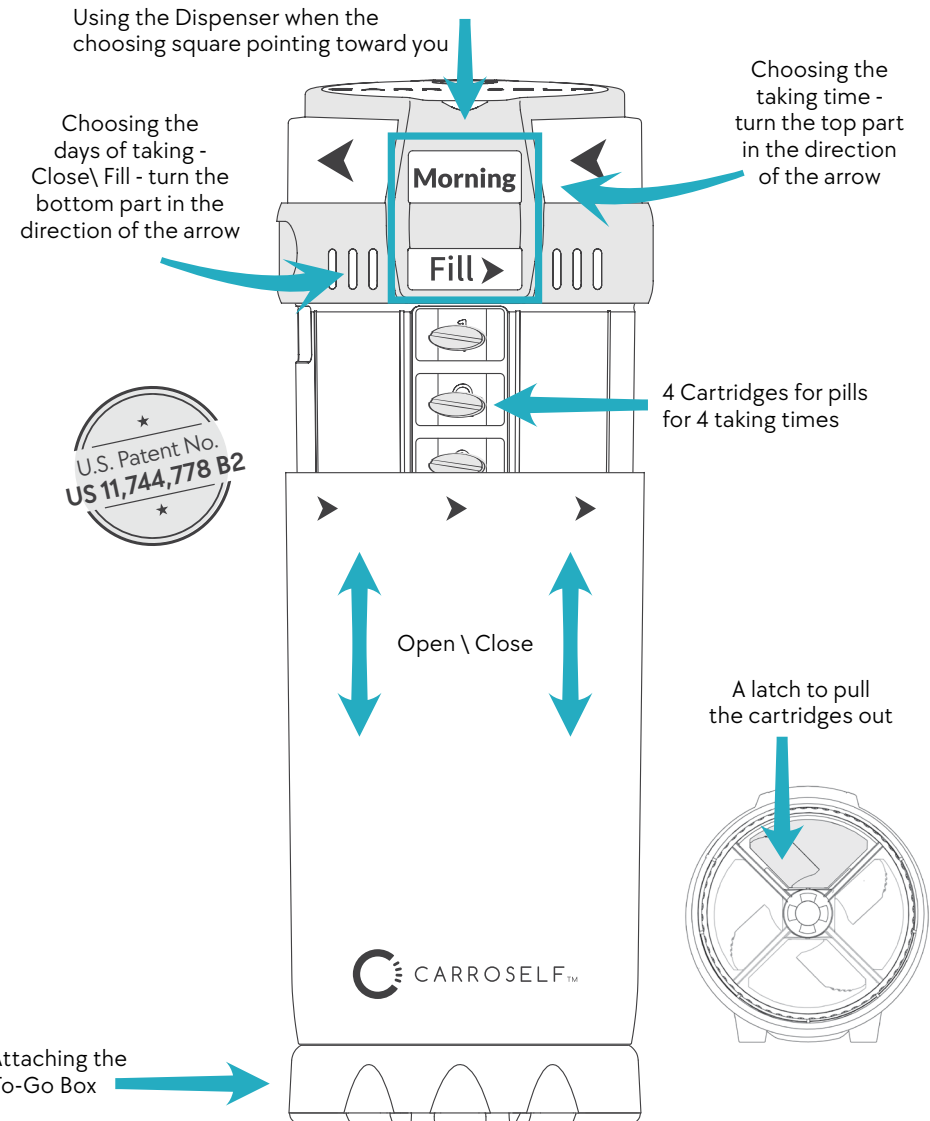
A Box With Four Extra Cartridges

Suites anyone who needs help with organizing the pills or for those who love to be ready. A box for organizing and storing including 4 cartridges for a convenient filling and preparing in advance.

www.carroself.com

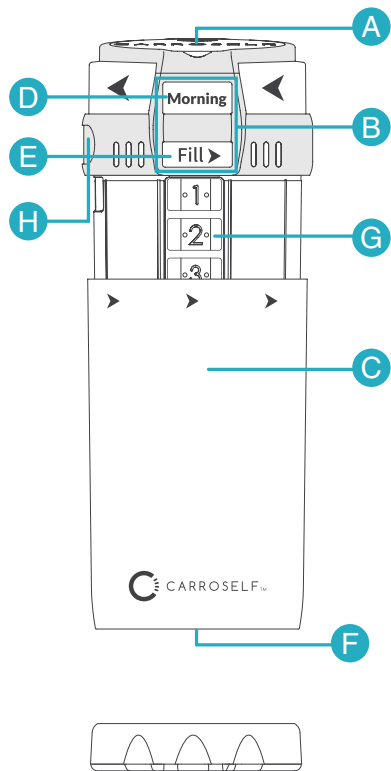


Smart Dispenser for Vitamin and Pill Management

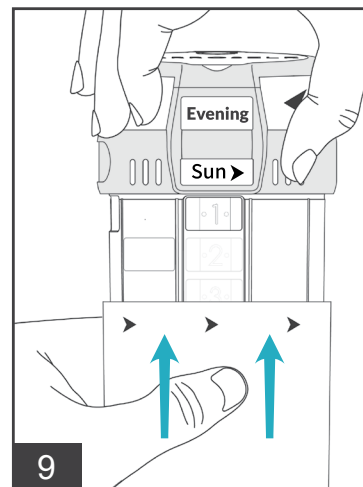
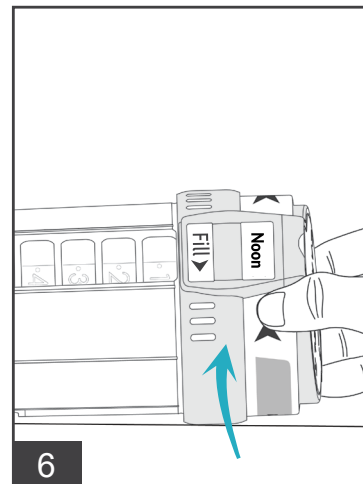
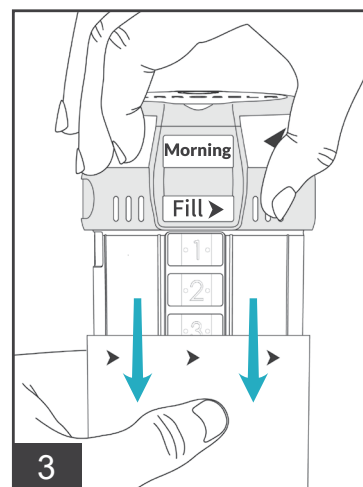
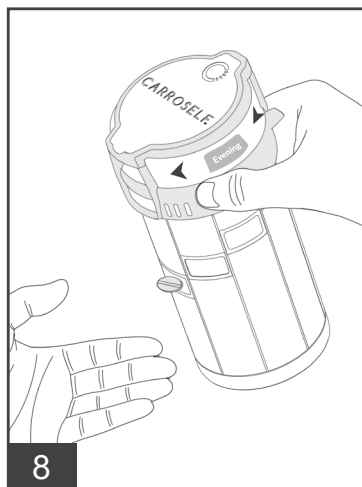
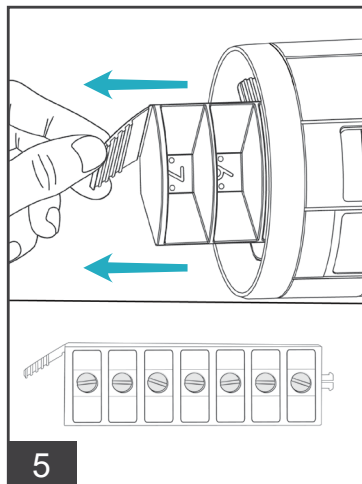
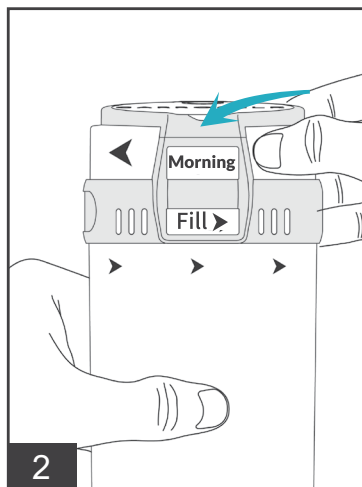
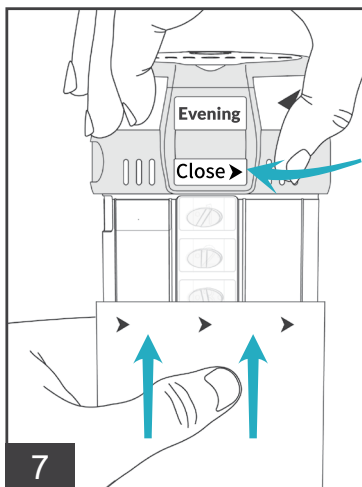
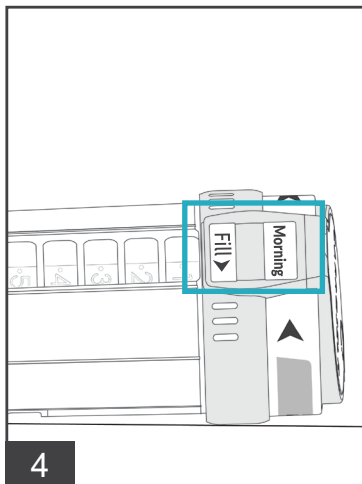
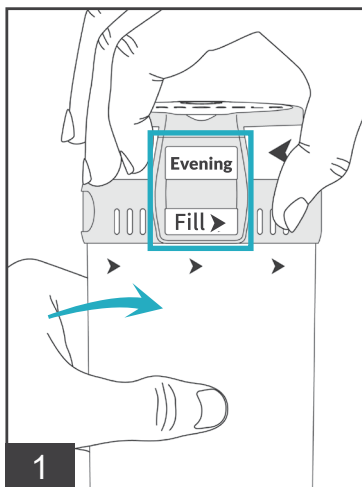


Additional Accessories

- A** Top lid \ Clock reminder (can be ordered separately)
- B** Choosing square with two windows
- C** External case
- D** Top ring is for choosing the time of taking: Morning\ Afternoon\ Evening\ Night
- E** Bottom ring is for choosing the days of the week, filling and closing the Dispenser
- F** An entrance for extracting and inserting the cartridges
- G** 4 Cartridges in different colors to fill with pills
- H** Indication for a name label



You can add and attach the Small Box To Go to the bottom of the Dispenser which you can buy in addition to the Dispenser



Instructions for filling Vitamins and \ or pills

1. The use of the Dispenser would be only with the choosing square (B) pointing toward you. Choose 'Fill' in the bottom ring: hold the external cover (C) and turn in the directions of the arrows.
2. Choose a filling time: turn the top ring in direction of the arrow (D) to the suitable filling time in the top choosing rectangle: Morning\ Afternoon\ Evening\ Night
3. Open the device: hold the upper part of the device and pull down the external cover.
4. Put the device in a laying position on the table when the choosing square (B) and the open part of the filling container are pointing up.
5. Hold the latch of the cartridge (F) and pull the chosen cartridge out. Fill the filling cartridge (G) as needed, and return it to its place until you hear a locking sound.
Make sure to fill the right pills based on the time the cartridge is showing.
6. Continue filling up the device when he is laying on the table and the choosing rectangles are pointing up: turn the top choosing square in the directions of the arrows (B) to the next time. Pull out the next cartridge (G), fill and return it to its place. Repeat this action until all the cartridges are full.
7. Close the device: turn the bottom ring in the direction of the arrows (E) to the 'Close' position. The filling process of the pills is complete. Return the external cover (C) to the device.

Taking vitamins and/or pills regularly

1. (Illustration no. 1) The use of the Dispenser is only when the choosing square (B) is pointing toward you.
2. (Illustration no. 2) To choose the taking time, turn the upper ring in the directions of the arrows (D) to the suitable taking time.
3. (Illustration no. 3) Hold the top lid (A) and pull the external cover (C) down fully.
4. (Illustration no. 8) Pour the open cell content into your palm. There would be an open cell corresponding to your day of taking and the time of taking.
5. (Illustration no. 9) Close the external cover (C).
Repeat this action based on the time of taking and the days respectively.